



AQUATROL® COMBINATIONS

4511

4500 AQUATROL® Pressure Actuated Mixer

- Durable stainless steel balancing piston to equalize hot and cold supply pressures.
- Built-in shutoff for single handle operation
- Removable one piece upper and lower valve seat
- Internal parts of bronze and stainless steel
- Cast wall flange and lever handle, polished chrome plated
- Maximum operating pressure: 125 PSIG (860KPA)
- Adjustable high temperature limit stop set for 110°F* (43°C)
- Color coded dial, Off through Hot, with directional indicators
- Angle checkstops, copper tube connection
- Plasterguard/thin wall mounting bracket included.
- H-06 Institutional shower head, brass fixed spray, 2.5 GPM, (9.5l/min)

Valve is ASSE · 1016 Certified  
 Valve is CSA · B.125-05 Certified

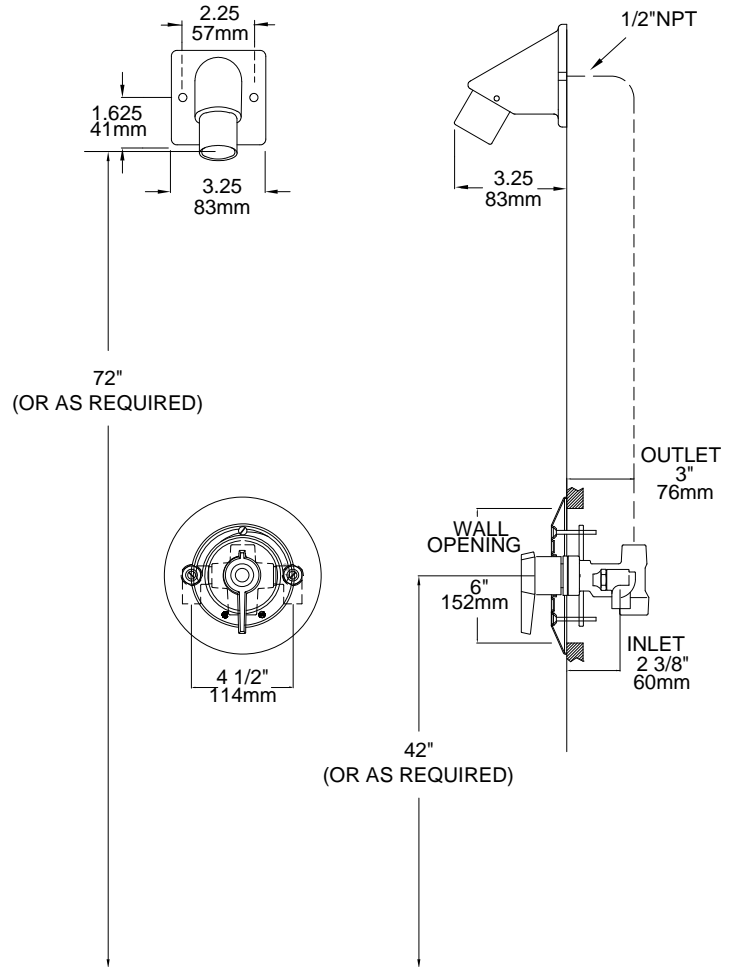
OPTIONS:

- ___ SUFFIX H-03 large brass ball joint shower head in place of H-05
- ___ SUFFIX AP Anchor plate with screws for H-06

Note: Leonard Valve Company reserves the right of product, or design modifications without notice or obligation.



WARNING: This product can expose you to chemicals including lead, which is known to the State of California to cause cancer. For more information, go to www.P65Warnings.Ca.gov



Engineer's Approval	Job # _____
	Arch/Eng. _____
	Contractor _____